

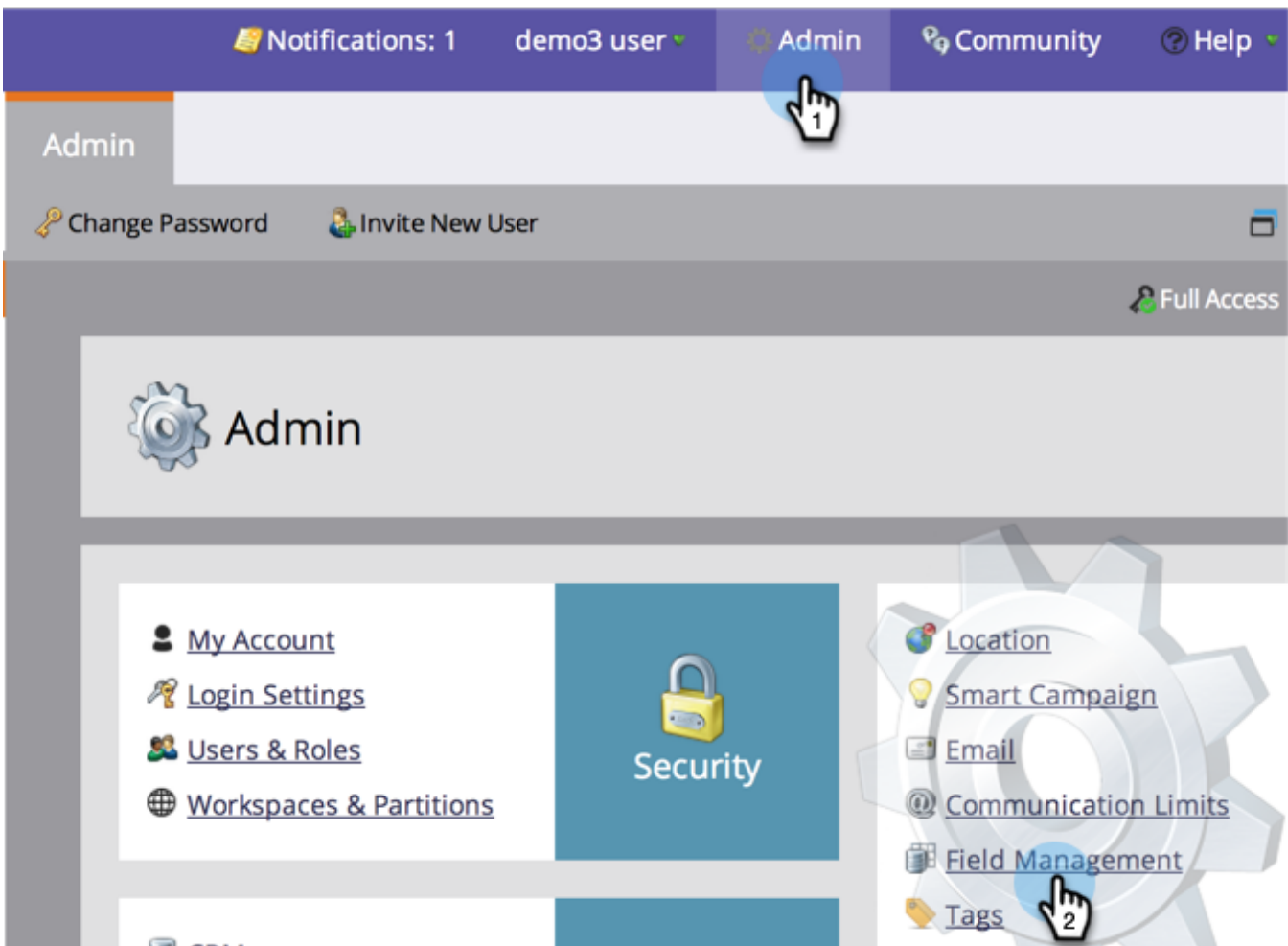
# Creating a Custom Tab for the Person Detail Page

## FYI

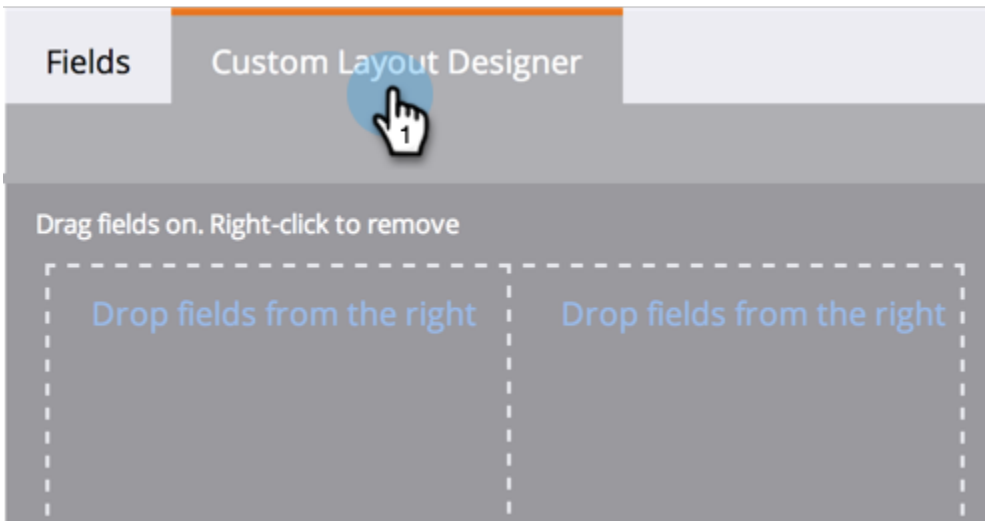
Marketo is now standardizing language across all subscriptions, so you may see lead/leads in your subscription and person/people in docs.marketo.com. These terms mean the same thing; it does not affect article instructions. There are some other changes, too. [Learn more.](#)

If you find yourself looking for a specific set of fields in the person detail over and over again, consider creating a custom layout to make things easier.

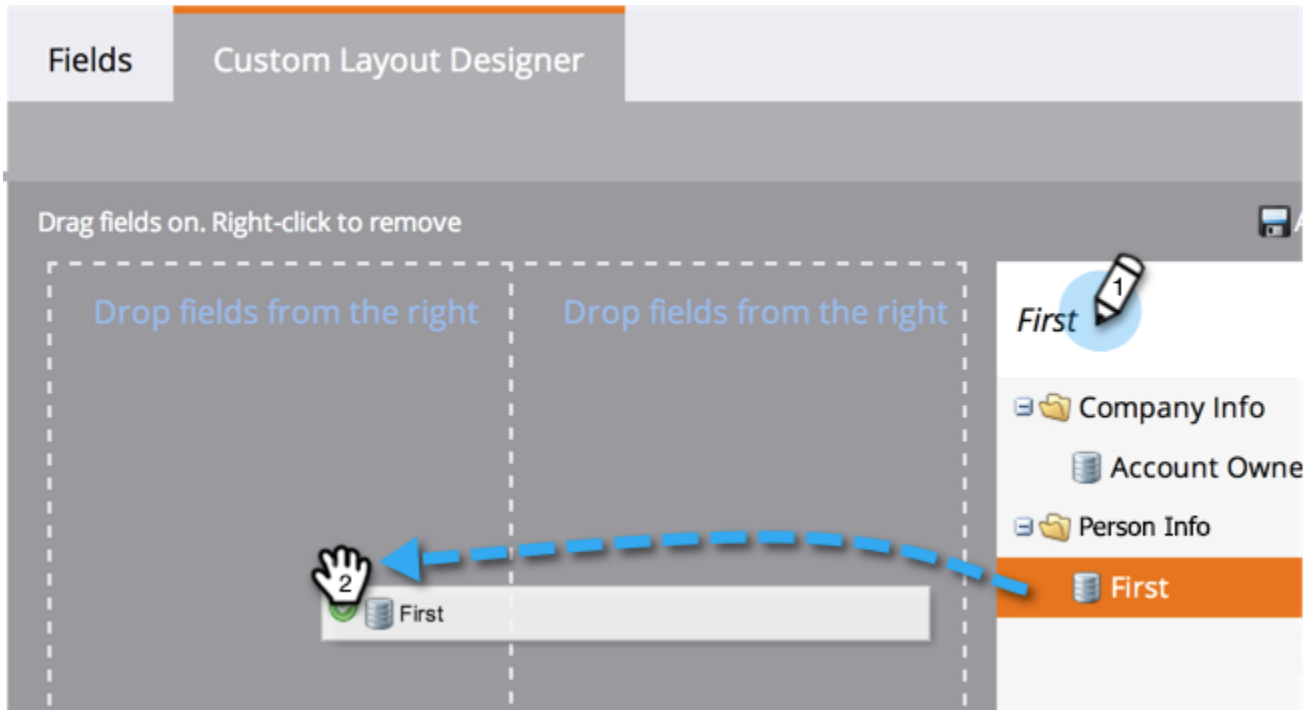
1. Go to **Admin** and click **Field Management**.



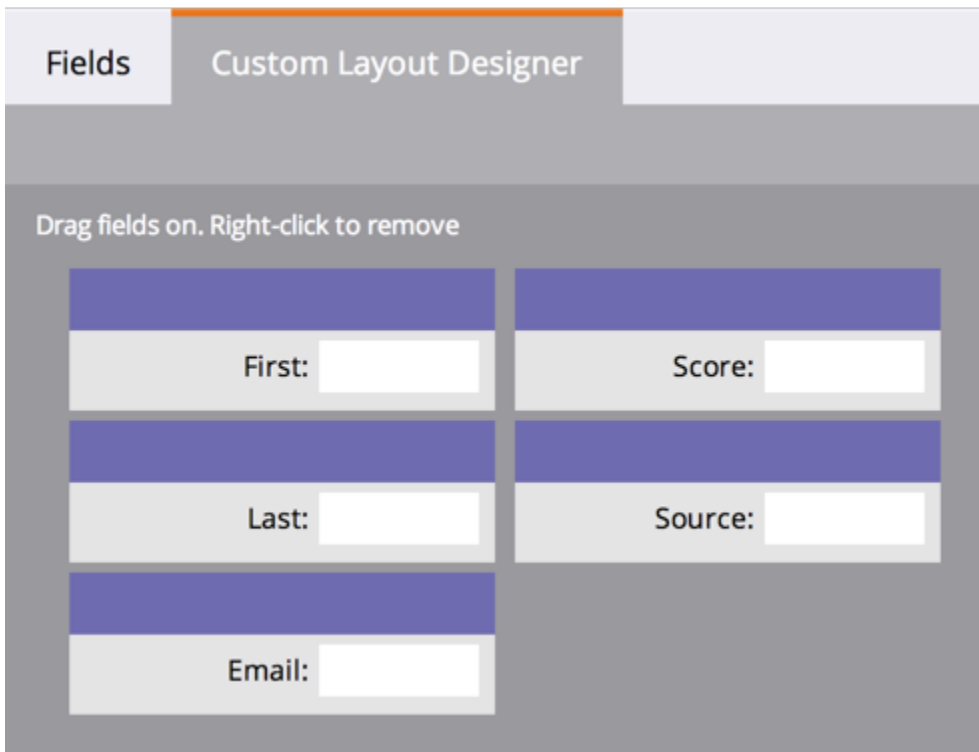
2. Click the **Custom Layout Designer** tab.



3. Find a field you want to add, then drag and drop it into the canvas.



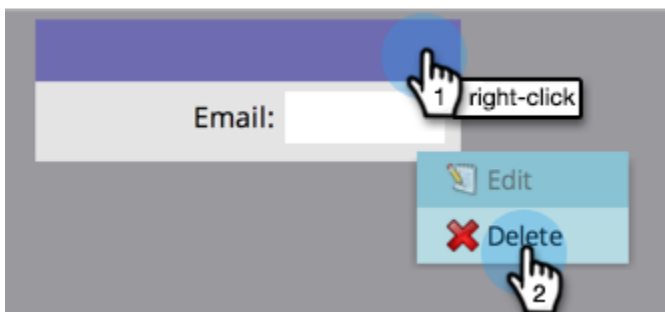
4. Continue adding fields until you have the layout the way you want it.



## Note

You have two columns to work with.

5. If you decide you want to remove a field, right-click the field you want to remove and click **Delete**.



Awesome work! Now when you load a person's details, you can use your custom layout to access the information important to you.



Custom

Info

Company Info

Opportunity Info

Activity Log

First:

Mark

Score:

5

Last:

Eto

Source:

Email:

mark@eto.com