

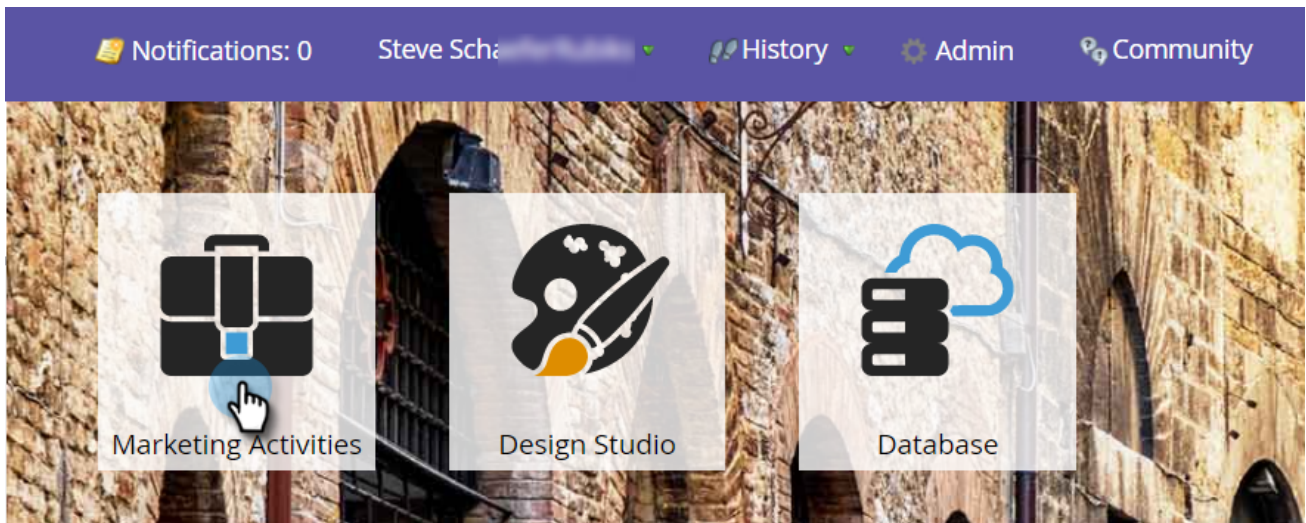
# Add Multiple Values to a Smart List Filter

## Prerequisites

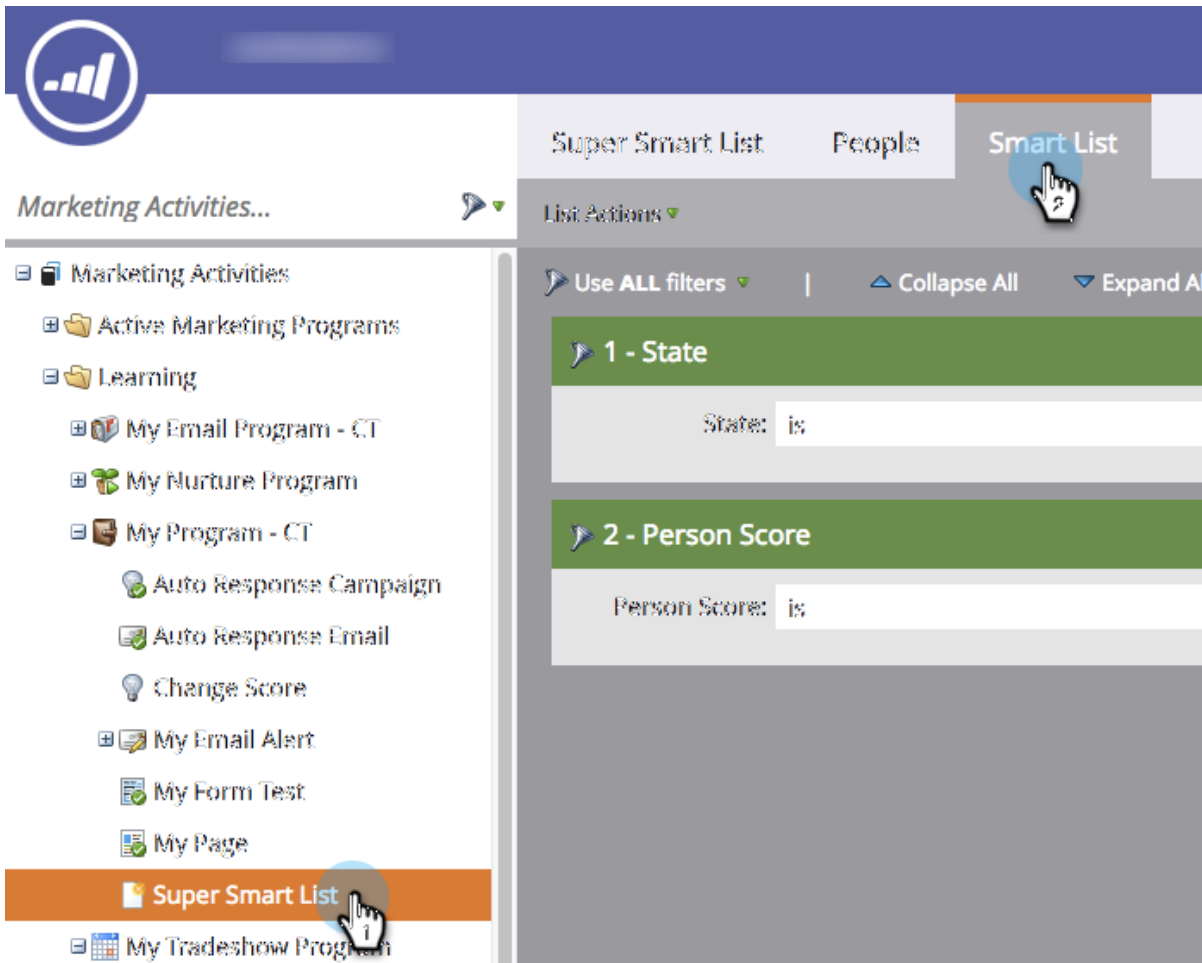
- [Create a Smart List](#)
- [Find and Add Filters to a Smart List](#)

Let's say you want to find everyone in California, but you might be storing both **California** and **CA** in your Database. To include all applicable people, you could use two **State** filters, but it's easier with one.

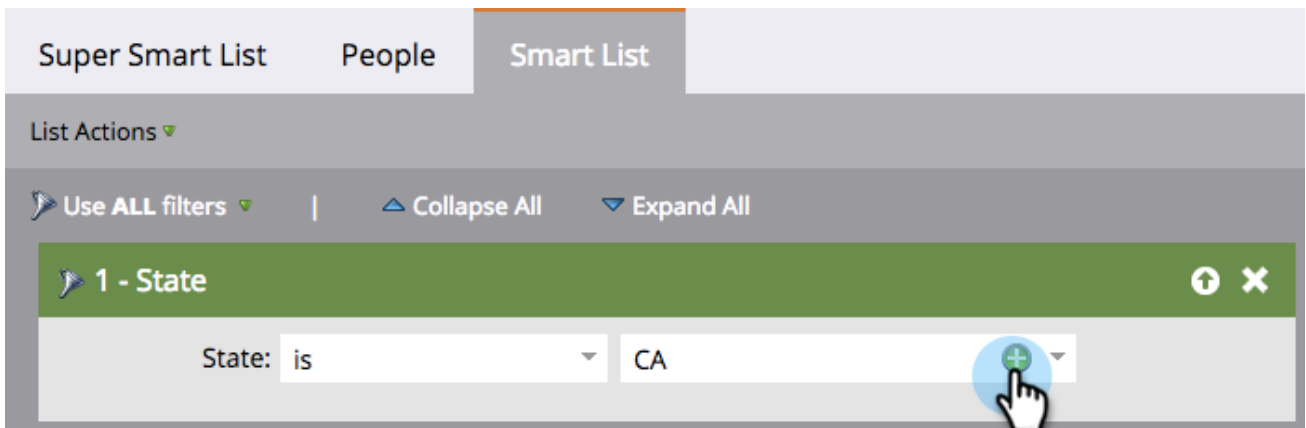
1. Go to **Marketing Activities**.



2. Find and select a smart list and click the **Smart List** tab.



3. Click the **plus sign** on the filter.



4. You can choose values from the left or just type them on the right then click **OK**.

## Multiple Value Chooser

**Add New Values**

Select...

**Selected Values (1)**

CA  
California

**Info:** Add multiple values to the text area on the right. Use the search box above to find appropriate values.

Any values on the right qualify for this condition.

CANCEL OK

Quick work!

### Related Articles

- [Add a Constraint to a Smart List Filter](#)
- [Use Advanced Filters in a Smart List](#)

