

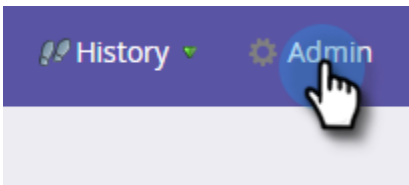
Export Used By Data for a Field

As an Admin, you have the ability to export related assets of a field so you can delegate their de-linking to your team.

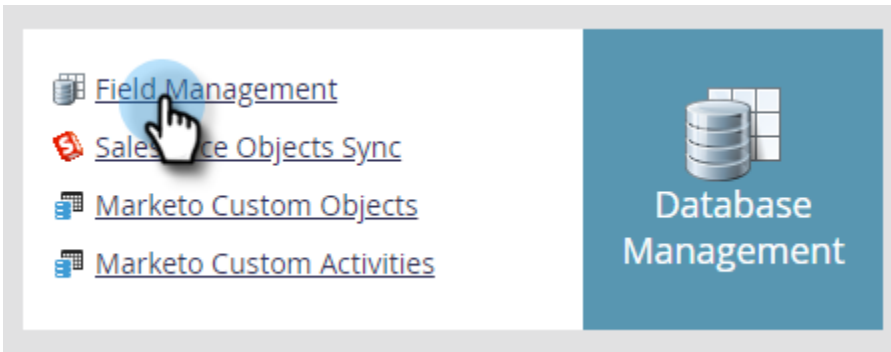


Admin Permissions Required

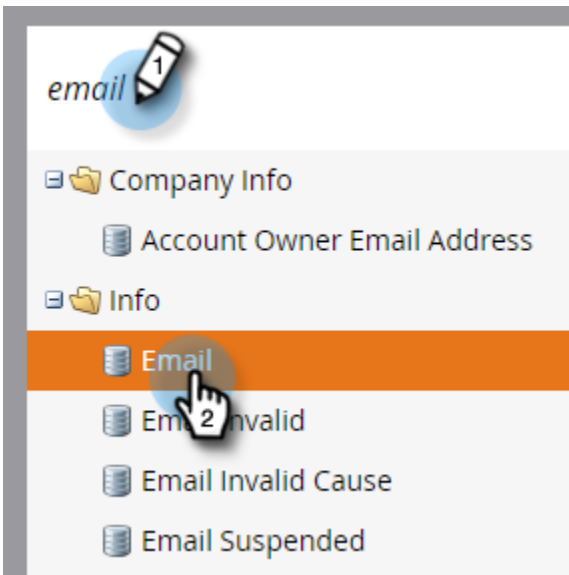
1. Click **Admin**.



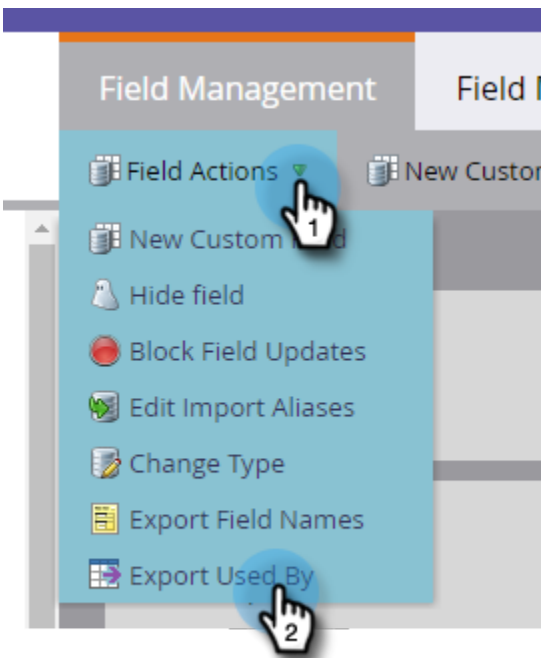
2. Click **Field Management**.



3. Find the desired field and select it.



4. Click the **Field Actions** drop-down and select **Export Used By**.



5. An Excel file will export. Open it to view its content.

	A	B
1	Field Used In	Used By Type
2	Forms Related program.Sign up form	Landing Page Form
3	Forms Related program.Sign up form	Landing Page Form
4	EngagementProgram.TestProgramSupposedToBelInsideAProgram.HaHa	Landing Page Form
5	My Email Program- KH	Email Batch Program
6	My Program - KH.My Form	Landing Page Form
7	EngagementProgram2.TestProgramSupposedToBelInsideAProgram.HaHa	Landing Page Form
8	Program RF.another unapproved form	Landing Page Form
9	2020-Jan-MCE Preparations-Stage 2.Test form	Landing Page Form
10	Program RF.Test form	Landing Page Form
11	State_Form	Landing Page Form
12	New hai bhai	Landing Page Form
13	2020-Jan-MCE Preparations-Stage 2.Test form	Landing Page Form
14	2020-Jan-MCE Preparations-Stage 2.Marathon Registration Form	Landing Page Form
15	FormToBeArchived	Landing Page Form



Tip

Each related asset is a link that can be clicked on and will open in Marketo.